

## Using FTP In Adobe GoLive 4.x

Adobe GoLive is a world class web publishing program. It is great for creating simple changes to managing sites with thousands of pages. This tutorial will show you how to upload your web pages and/or site from GoLive to one of our FTP servers. Although the screen shots are from the Macintosh version, the Windows version is similar. If you are not familiar with Adobe GoLive you can purchase or download a trial copy from Adobe:

<http://www.adobe.com/products/g>




After you have completed your site and tested all links and pages, you can proceed to uploading your site to the Web server, so your audience can browse your pages.

### Adobe GoLive features two FTP tools:

1. The built-in FTP tool is integrated in the Site Window. It resides in a vertical tab in the right pane (Macintosh), in a lower left arrow (Windows). You'll use this FTP tool to upload your site to the Web server or edit pages remotely. [[Click here to jump to this tutorial](#)]
2. The standalone FTP Upload & Download window allows you to access FTP servers on the Web and upload or download file from within the application. [[Click here to jump to this tutorial](#)]

**Note:** the home page needs to be called ***index.html*** if you are uploading to a unix server, ie. home.labridge.com . If you are uploading to our Macintosh server then your home page needs to be called ***default.html***, ie. labridge.com. If you are not sure what server to upload please send us an email: [GoLive@LABridge.com](mailto:GoLive@LABridge.com)

### FTP Option 1.

First, make sure you are in a site window, then click the *Site Settings* button  or select Site > Settings. Now you should see Figure 1, select *FTP* from the list.


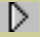
Now you want to fill in the FTP information:

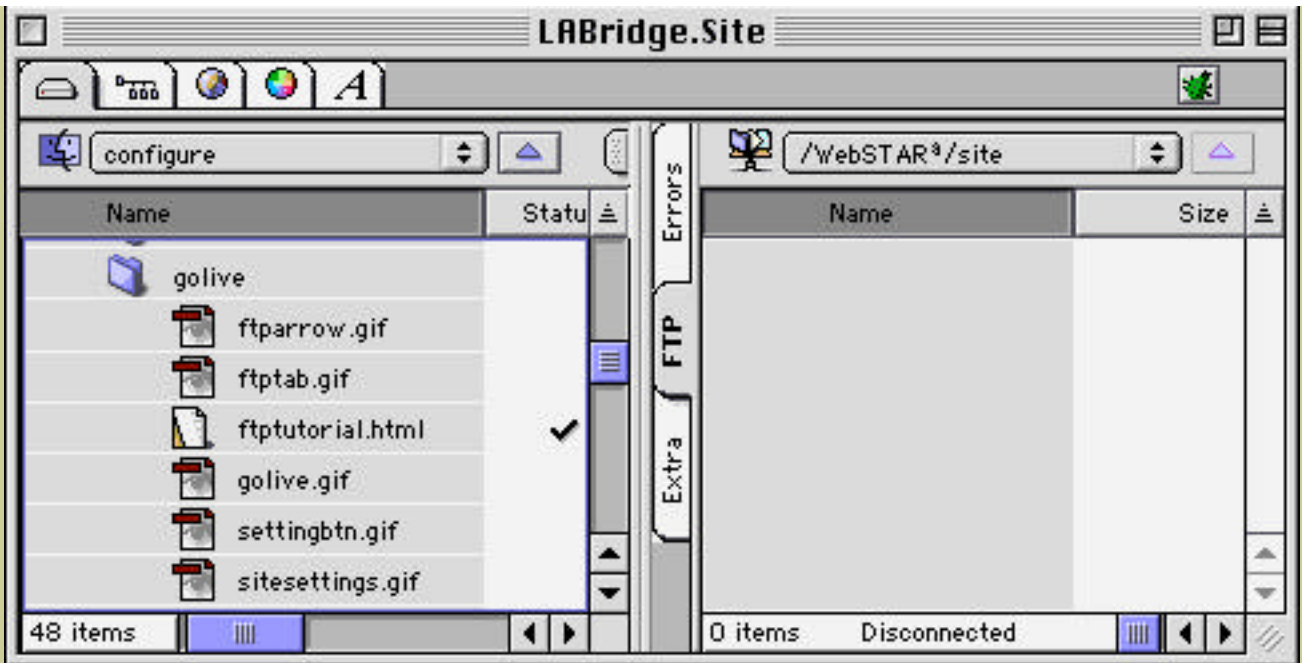
- Server: ftp.home.labridge.com or ftp.labridge.com (specified in welcome email from L A Bridge)

- Directory: your Username
- Then add your Username and Password




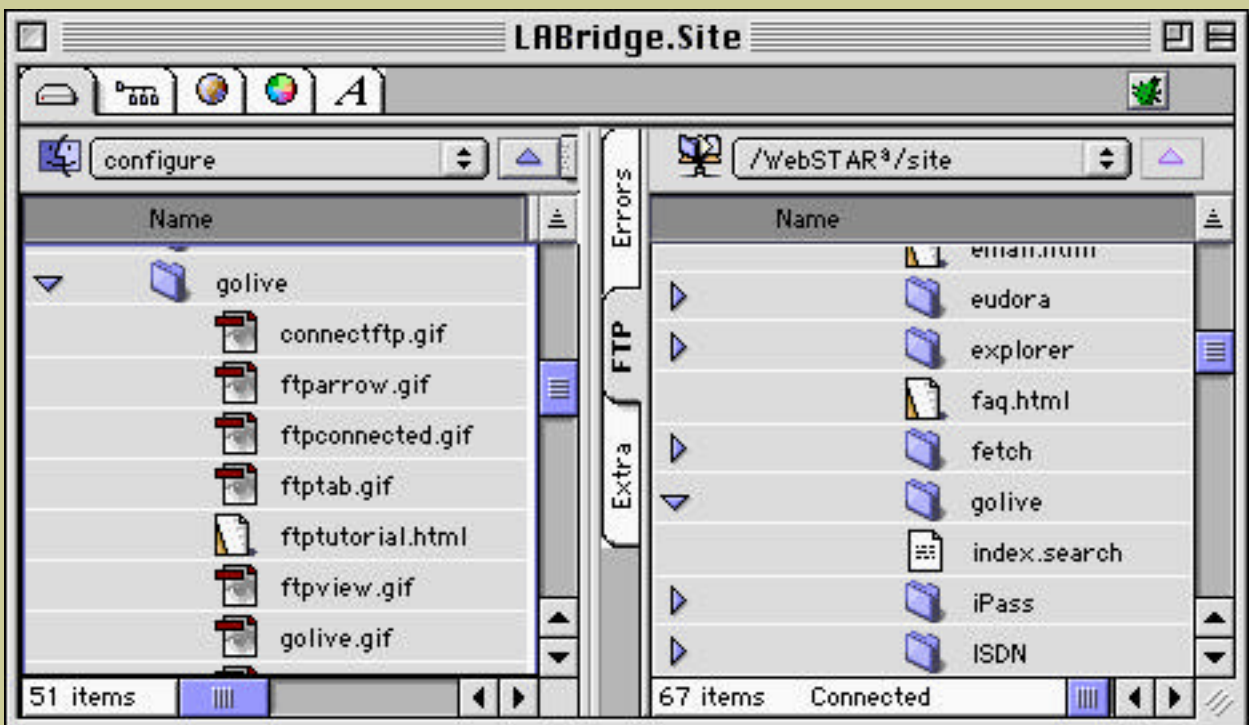
(Figure 1)

Now we will go to the FTP view. Macintosh users click this icon  to display the right pane of the Site Window. Windows users click this icon  on the lower left corner to display the bottom pane of the Site Window. Now select the FTP tab.



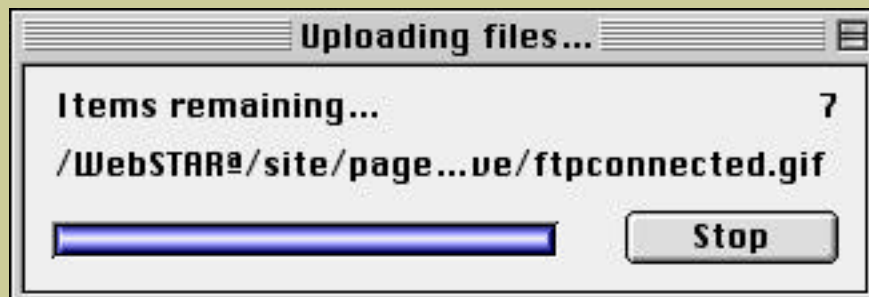
(Figure 2)

Now we will open a connection to the FTP server. Click the Web server icon  to connect to our FTP server. Now you should see Figure 3. (Note: if you have not uploaded anything before the directory will contain a few tutorial files.) Here you can see what the L A Bridge support directory looks like before I upload this tutorial. Notice empty golive folder.

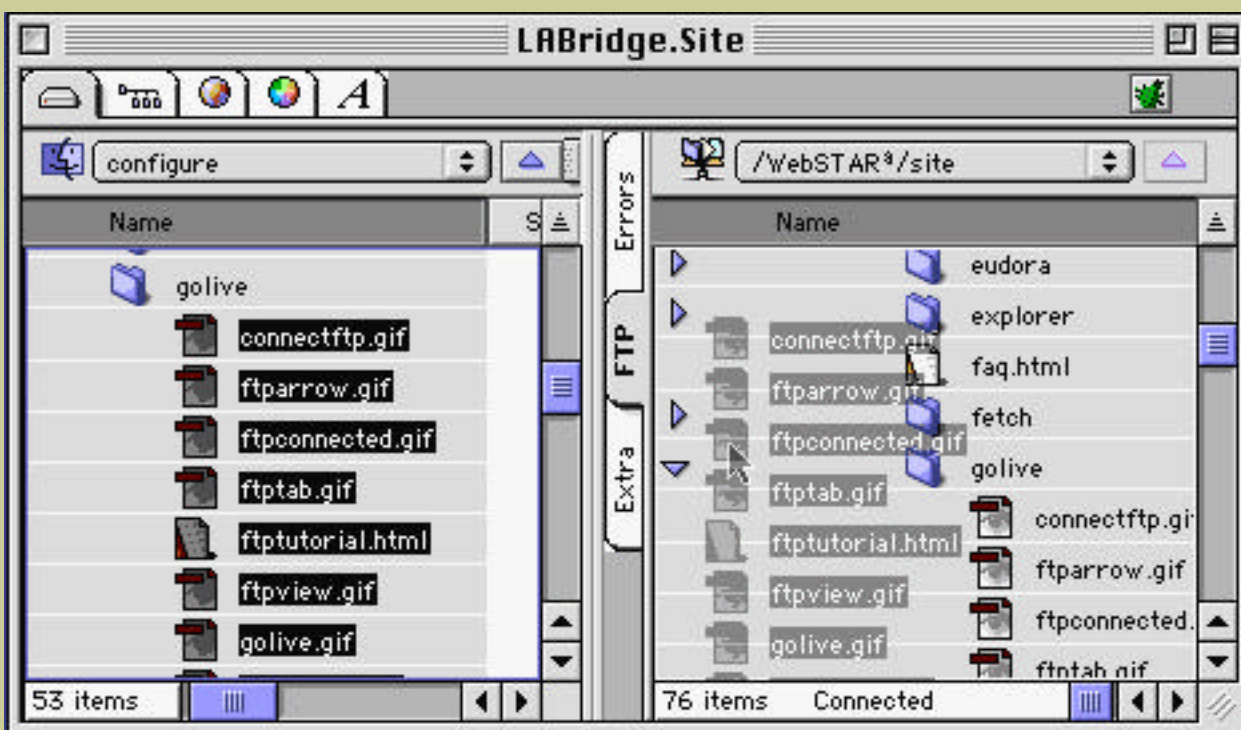


(Figure 3)


Now to upload pages and images you can select the items you want to upload and simply drag them to the directory you wish. As shown in Figure 4b. When files begin to upload a dialog window comes up showing you what files are transferring. See Figure 4a. Notice golive folder now has HTML files and images ready to be viewed by Internet users.



(Figure 4a)



(Figure 4b)

Now to close the FTP connection just click the Web sever icon  .

### **That's it!**

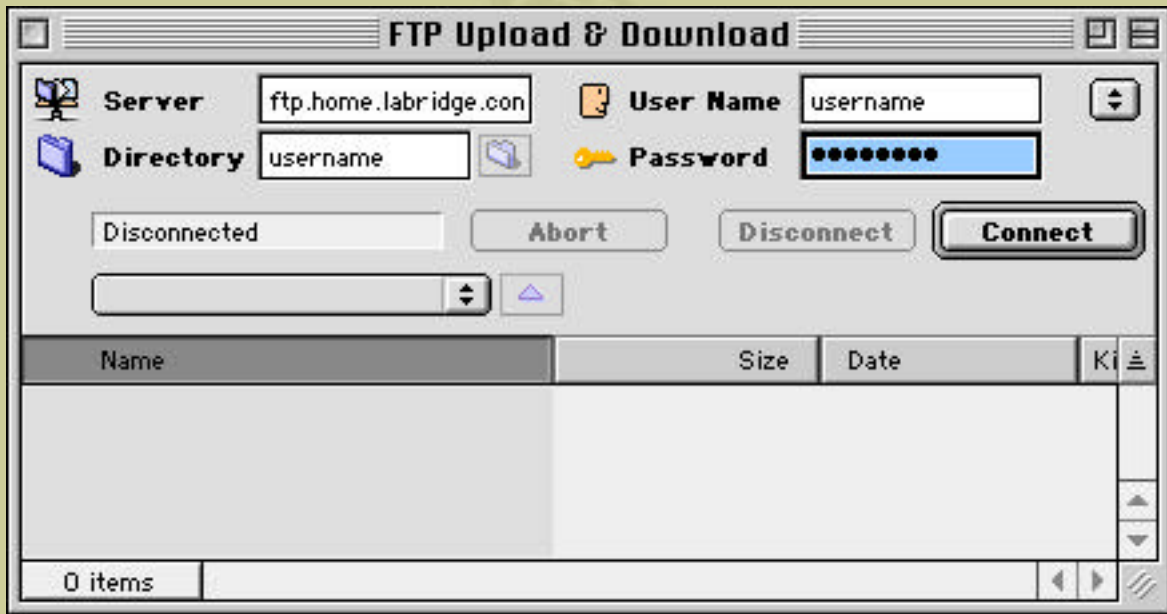
To see your home page enter `http://home.LABridge.com/~your_username_here/` into the location bar of Netscape or Internet Explorer.

### **FTP Option 2.**

To open the standalone *FTP Upload & Download* window select from `File > FTP Upload & Download` then Figure 5 will show up.

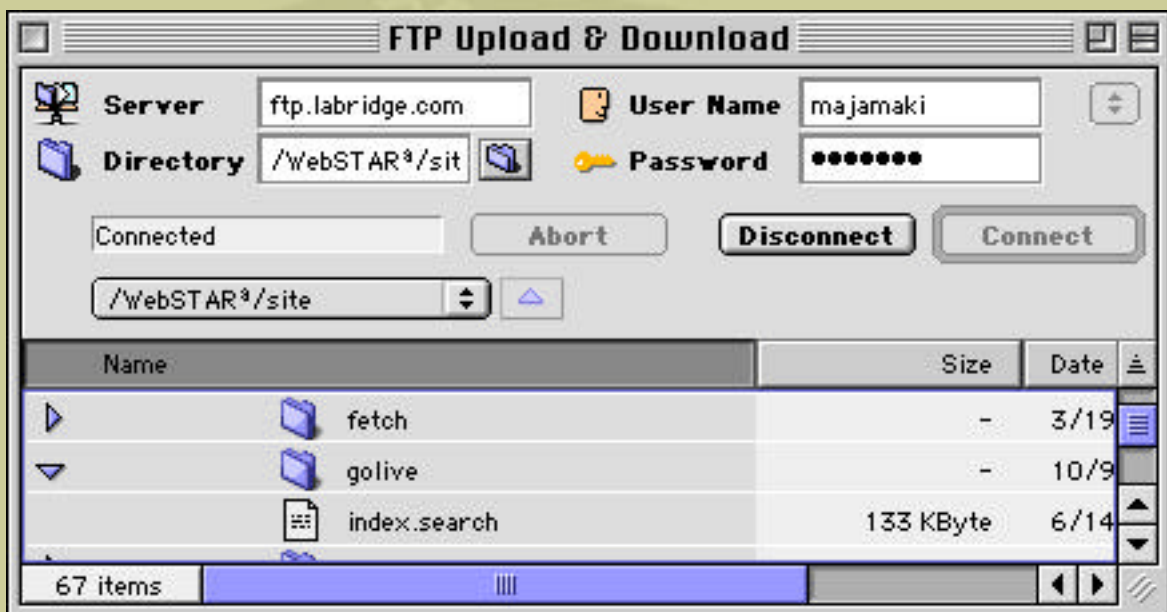
Now you want to fill in the FTP information:

- Server: ftp.home.labridge.com or ftp.labridge.com (specified in welcome email from L A Bridge)
- Directory: your Username
- Then add your Username and Password



(Figure 5)

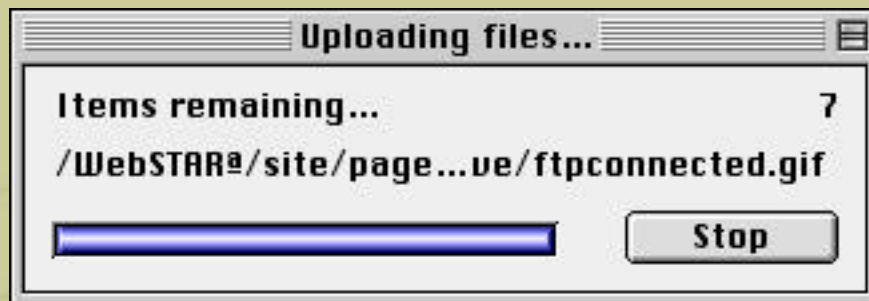
Now we will open a connection to the FTP server. Click the **Connect** button to connect to our FTP server. Now you should see Figure 6. (Note: if you have not uploaded anything before the directory will contain a few tutorial files.) Here you can see what the L A Bridge support directory looks like before I upload this tutorial. Notice empty golive folder.



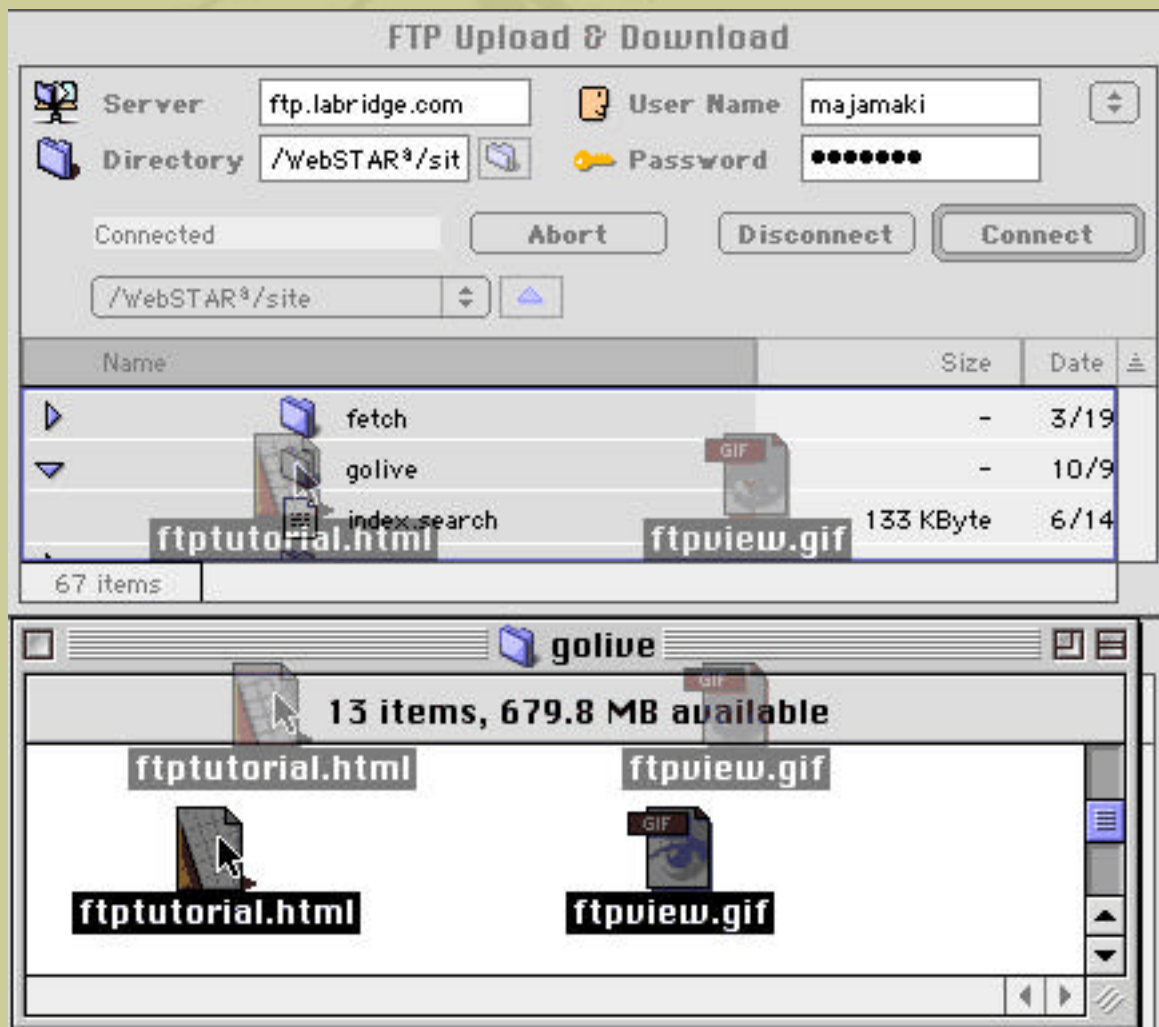
(Figure 6)

Now to upload pages and images you can select the items you want to upload from anywhere on your computer the Finder/Explorer and simply drag them to

the directory you wish. As shown in Figure 7b. When files begin to upload a dialog window comes up showing you what files are transferring. See Figure 7a.

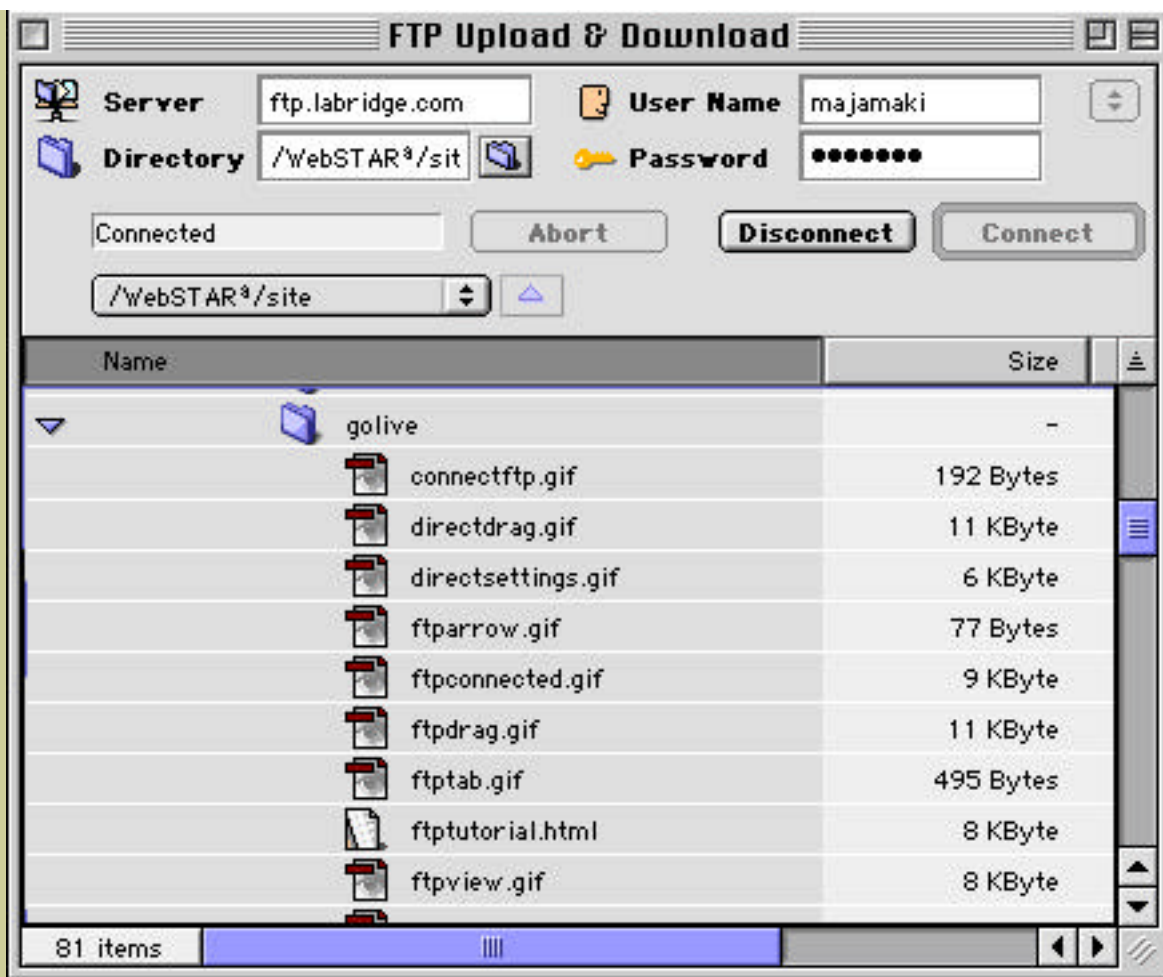


(Figure 7a)



(Figure 7b)

Now notice the golive folder now has HTML files and images ready to be viewed by Internet users. Figure 8



(Figure 8)

Now to close the FTP connection just click the **Disconnect** button.

**That's it!**

To see your home page enter  
`http://home.LABridge.com/~your_username_here/` into the location bar of  
Netscape or Internet Explorer.

*If you are having problems uploading your web pages via Adobe GoLive please send us an email: [GoLive@LABridge.com](mailto:GoLive@LABridge.com)*

[This page is located at:  
`http://www.LABridge.com/site/configure/my/golive/ftptutorial.html`]

...a community Internet Service Provider

**Postal Mail:** 2633 Lincoln Blvd. #426 Santa Monica, California 90405

**NOC:** [4676 Admiralty Way #450 Marina Del Rey, CA 90292](mailto:4676 Admiralty Way #450 Marina Del Rey, CA 90292)

v: 310.823.6416 ~ [LABridge@LABridge.com](mailto:LABridge@LABridge.com) ~ f: 310.827.3216

[Home](#) | [Sign up & Fees](#) | [Featured Services](#) | [Esteemed Clients](#) | [Support Calendar](#) | [About](#) | [Site Map](#) | [Search](#) | [What's New](#) | [Live Web Cam](#) | [DSL](#)