



FTP with Fetch for Mac

Fetch is a great program for transferring files from your computer to the server. If you don't have it you can download it from ftp.dartmouth.edu

To upload your website launch Fetch. Once open you should see Figure 1.

 A screenshot of the "New Connection..." dialog box in the Fetch application. The dialog has a title bar with "New Connection...". Below the title bar, it says "Enter host name, userid, and password (or choose from the shortcut menu):". There are five input fields: "Host:" with "ftp.dartmouth.edu", "User ID:" which is empty, "Password:" which is empty, "Directory:" with "pub", and "Shortcuts:" with a dropdown arrow. At the bottom right, there are "Cancel" and "OK" buttons.

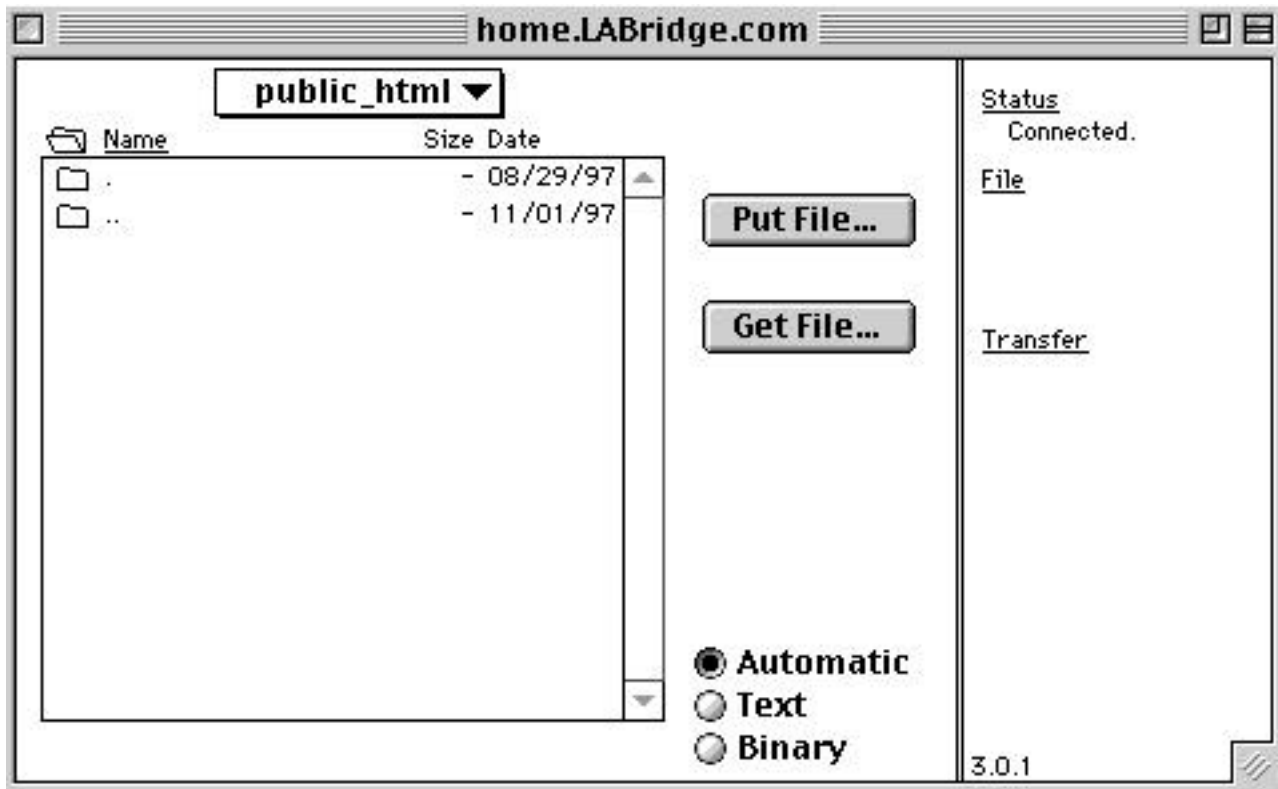
(Figure 1)

Now change Figure 1 to look like Figure 2, replacing "username" with your L.A. Bridge Internet username. Then click OK.

 A screenshot of the "New Connection..." dialog box in the Fetch application, showing the updated settings. The "Host:" field now contains "home.LABridge.com". The "User ID:" field contains "username". The "Password:" field is filled with ten dots. The "Directory:" field contains "~username/public_html/". The "Shortcuts:" field has a dropdown arrow. The "Cancel" and "OK" buttons are still present at the bottom right.

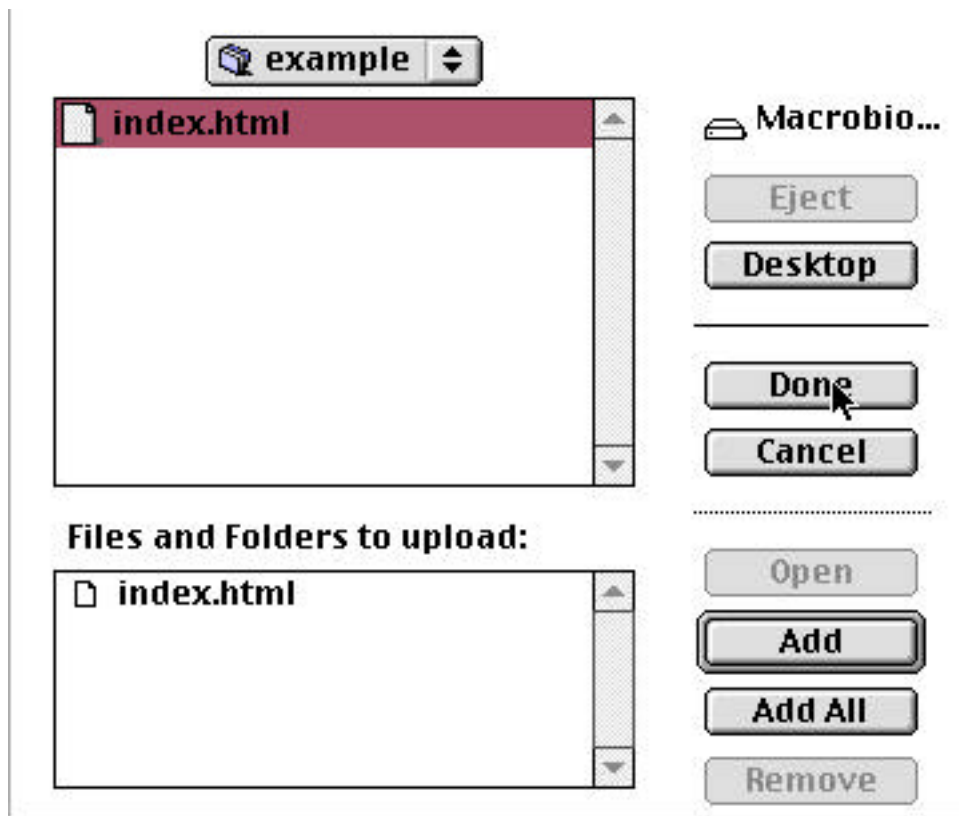
(Figure 2)

Great! Now you will see Figure 3, this is your FTP directory, all your web pages will be served from here.



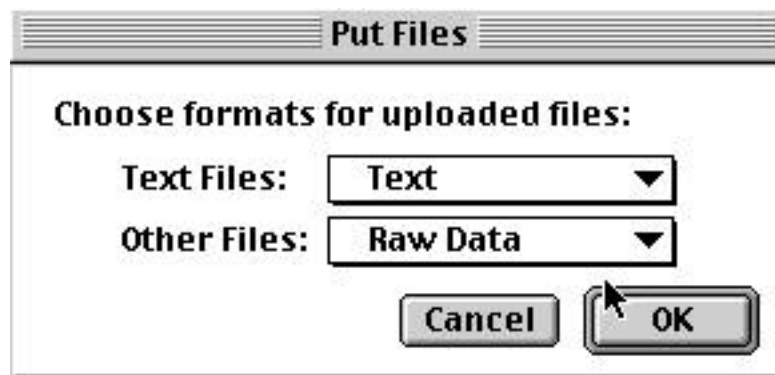
(Figure 3)

To upload the home page(s) select "Put Folders and Files..." under the "Remote" menu. This will open Figure 4. Now find your HTML page(s) and select Add. Once you have selected all the files you want, click done. **Note:** the home page needs to be called index.html (this is case sensitive) if you are uploading to a unix server. If you are uploading to our Macintosh server then your home page needs to be called default.html



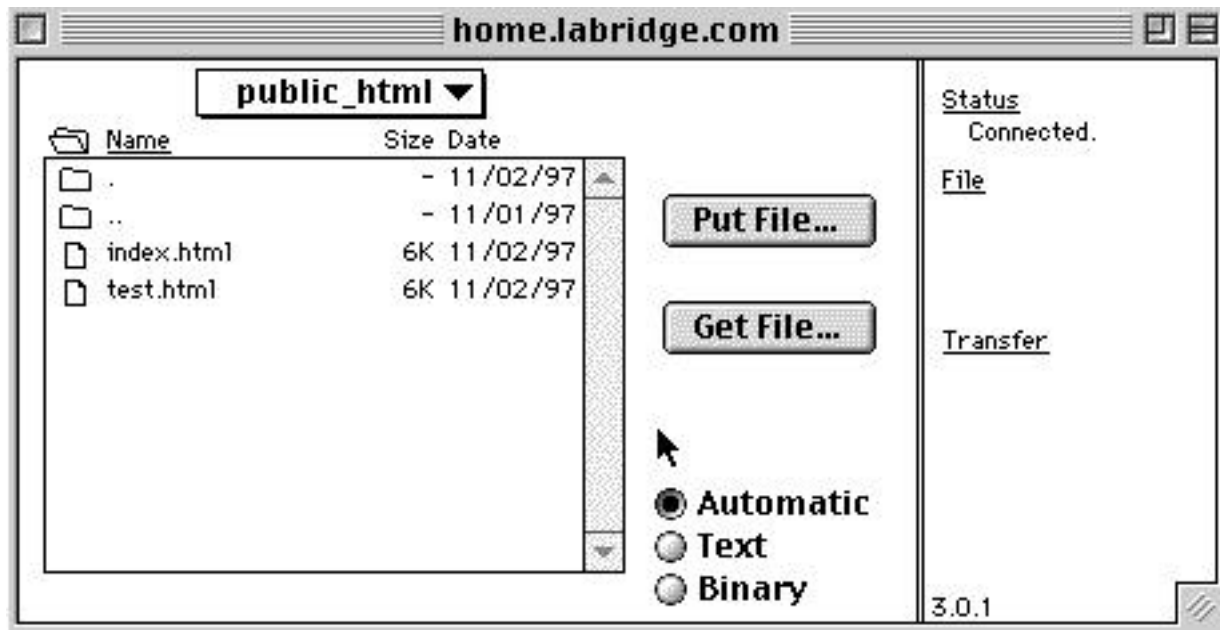
(Figure 4)

Now you should be looking at Figure 5. Change the pop-up menus to look like Figure 5 and click OK.



(Figure 5)

Great! Your cursor will change to a running dog for a few moments. This means the files are transferring to the server. Once complete, you should see Figure 6 with all the files you selected.



(Figure 6)

That's it!

To see your home page enter
http://home.LABridge.com/~your_username_here/ into the location bar of
 Netscape or Internet Explorer.

...a community Internet Service Provider

Postal Mail: 2633 Lincoln Blvd. #426 Santa Monica, California 90405

NOC: [4676 Admiralty Way #450 Marina Del Rey, CA 90292](mailto:LABridge@LABridge.com)

v: 310.823.6416 ~ LABridge@LABridge.com ~ f: 310.821.6529

[Home](#) | [Sign up](#) | [Services](#) | [Members](#) | [Support](#)
[Calendar](#) | [About](#) | [Partnership](#) | [Employment](#)