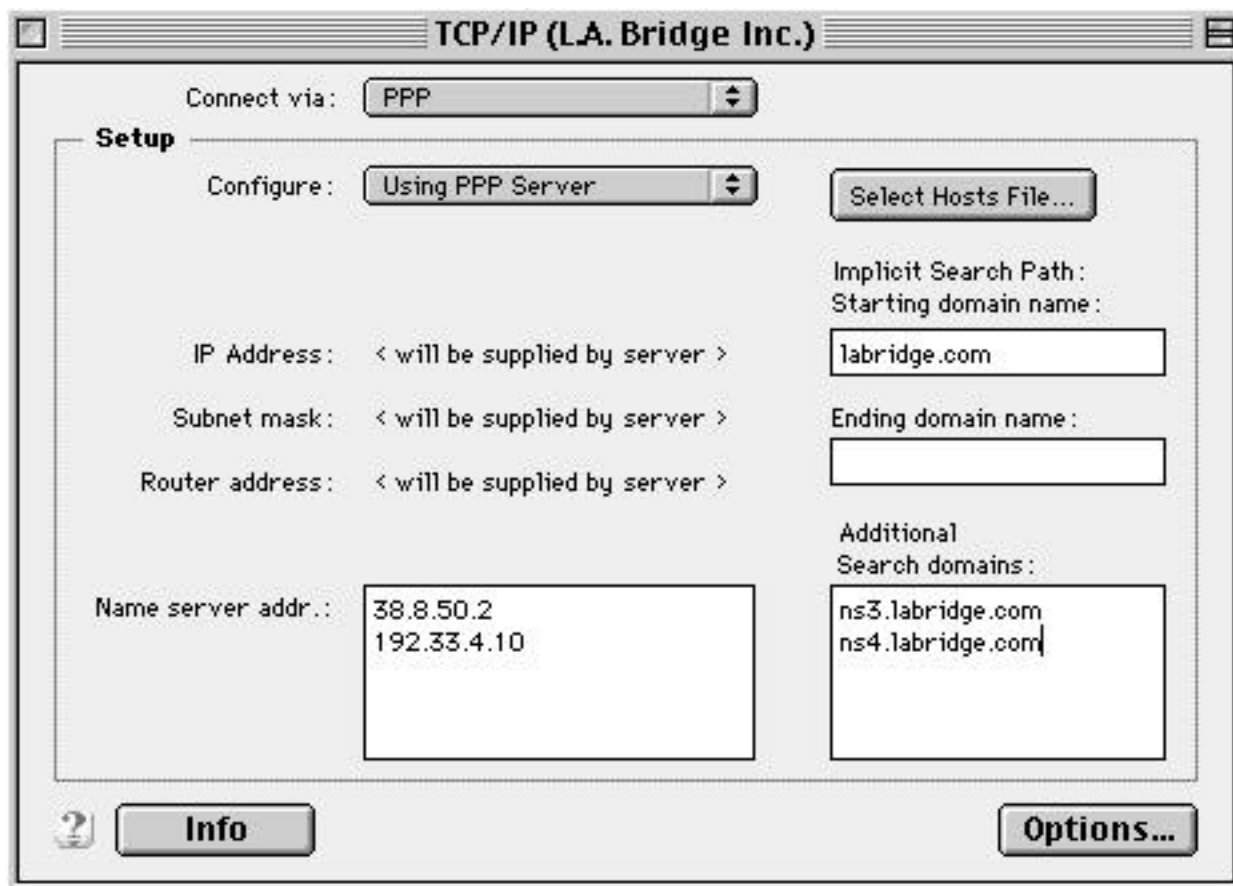




Setting up National OS8 Dialup

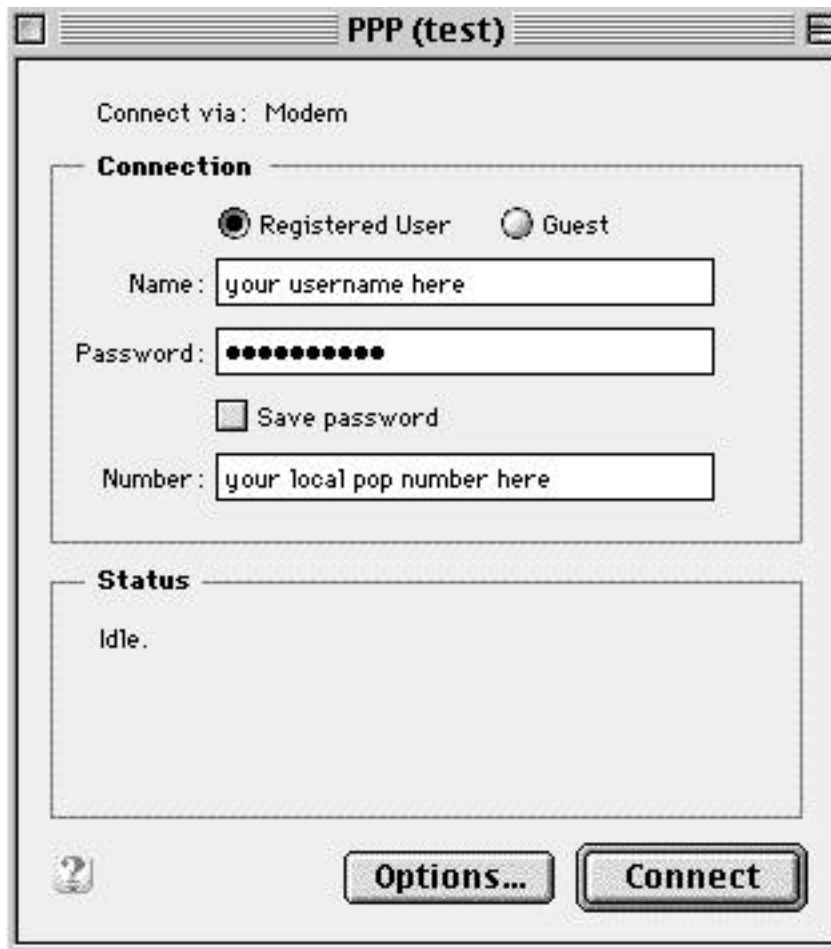
OS8 is a great Mac system and the Internet software is very simple to configure. As we go through the setup you're going to need to configure **PPP** and **TCP/IP**.

Your first step is to open the TCP/IP control panel. (Control panels are found in the apple menu). Make it look like this:



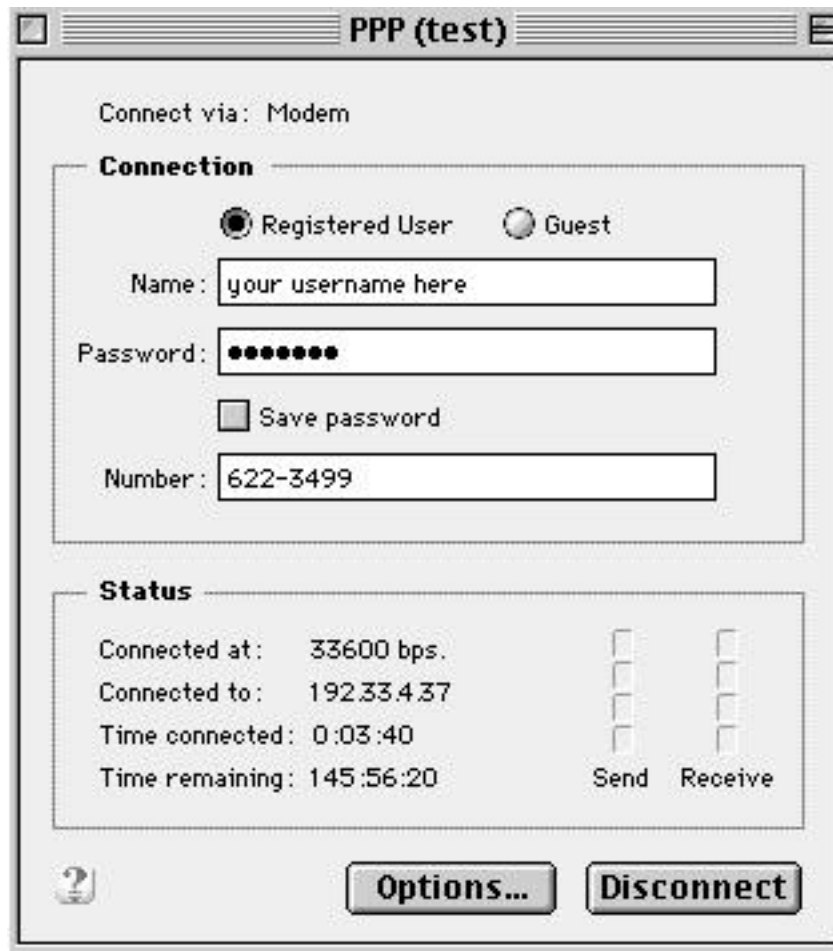
Great. That was easy. Now let's move on to the PPP control panel, also found in the apple menu. Add your username* and password in the fields below along with the phone number for your area. You can select your local **POP number here**. (<http://www.LABridge.com/site/pages/configure/my/pops/>)

***Note:** You need to have "ais/" before your username, ie. ais/username.



The image shows a window titled "PPP (test)" with a standard Windows-style title bar. Inside the window, the text "Connect via: Modem" is displayed at the top. Below this, there is a section titled "Connection" enclosed in a dashed border. This section contains two radio buttons: "Registered User" (which is selected) and "Guest". Below the radio buttons are three input fields: "Name:" with the placeholder text "your username here", "Password:" with a masked password of ten dots, and "Number:" with the placeholder text "your local pop number here". A checkbox labeled "Save password" is located below the password field. At the bottom of the "Connection" section is a large empty rectangular area. Below this area is a section titled "Status" which contains the text "Idle.". At the bottom left of the window is a help icon (a question mark in a circle). At the bottom right are two buttons: "Options..." and "Connect".

Great. Now, to log in, all you need to do is hit "connect". Once connected your PPP should look like this.



What Now?

You're ready to go. Once you're online you can use all your Internet programs like [Netscape](#), [Eudora](#), and [Internet Explorer](#). Information on these is on our website at <http://www.LABridge.com/> - you can type this in the location window in either Netscape or Internet Explorer. For help on setting up e-mail and news you can visit our users section at <http://www.LABridge.com/site/pages/configure/my/computer.html>

...a community Internet Service Provider

Postal Mail: 2633 Lincoln Blvd. #426 Santa Monica, California 90405

NOC: [4676 Admiralty Way #450 Marina Del Rey, CA 90292](#)

v: 310.823.6416 ~ LABridge@LABridge.com ~ f: 310.821.6529

[Home](#) | [Sign up](#) | [Services](#) | [Members](#) | [Support](#)
[Calendar](#) | [About](#) | [Partnership](#) | [Employment](#)