



## **Dialing up with Windows 95**

### **System Requirements**

These instructions will work with most Windows 95 compatible computers, using the Microsoft dialer software. Most versions of Windows 95 include everything you need to get started. Additional software can be downloaded once you are online.

**Warning:** If you have winsock.dll from Chameleon, Trumpet Winsock or any other source, it's going to conflict with the Windows 95 version of winsock.dll. Since the file winsock.dll in its various flavors is the heart of your internet connection, windows will get confused if you have more than one. You only need one, or your internet connection will not work. You can use the Netmanage Chameleon software with Win95. Or you can use the Win95 dialer. But not both at the same time.

### **Setting Up Dial-Up Networking:**

- 1) Check to see if Dial-Up Networking is installed. You can do this by double-clicking on the "Computer" icon which is located on your desktop. If it is installed, you will see a folder called Dial-Up Networking.
- 2) If you do not have a "Dial-Up Networking" folder, add Dial-Up Networking by going to the Start Menu, select Settings, select Control Panel, and choose the Add/Remove Programs option. Click on the "Windows Setup" tab, highlight the "Communications" option and click "Details". Put a check in the box next to the Dial-Up Networking Option. You may need your original Windows '95 installation disks or CD. Click OK and follow through the set-up process.

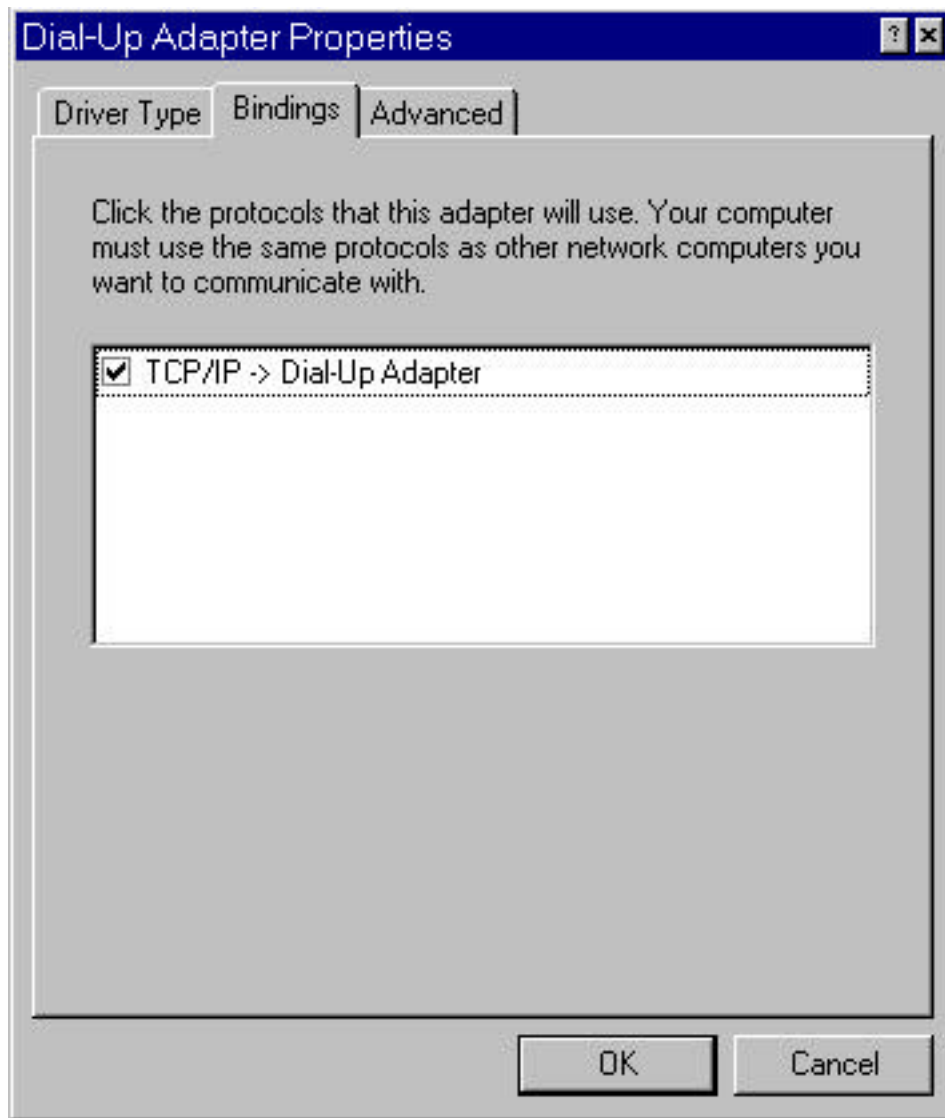
### **Installing and configuring TCP/IP:**

- 1) Go to the Network control panel by going to the Start Menu, select Settings, select Control Panel, and choose Network. It should look like Figure 1. If not, click the "Add" button, select "Protocol, and click the "Add" button again. This will bring up the "Select Network Protocol" dialog. Choose "Microsoft" from the Manufacturers list and "TCP/IP" from the Network Protocols list. Click OK. After installing TCP/IP and Dial-Up Adapter, your screen should match Figure 1.



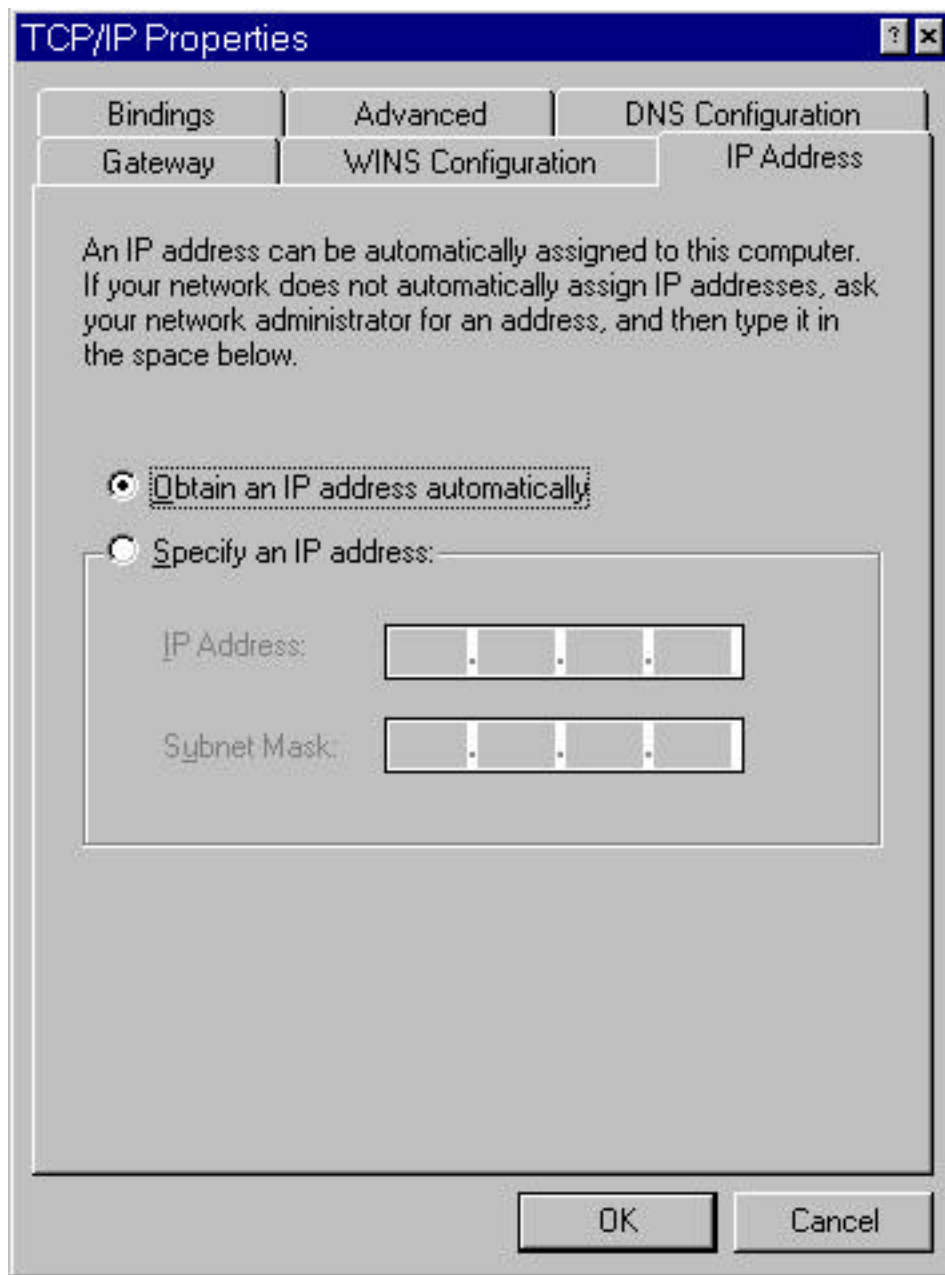
(Figure 1)

2) You need to make sure that TCP/IP is bound to your Dial-Up Adapter. Referring to Figure 1, highlight the Dial-Up Adapter and hit "Properties". Click on the "Bindings" tab. You should see a check next to TCP/IP. Your screen should look like Figure 2. Press OK when you are done. You should then be sent back to the previous screen (see Figure 1).



(Figure 2)

3) You need to set the TCP/IP properties. Referring to Figure 1, highlight TCP/IP in the Network Components Box and click Properties. You will then see a window pop up that looks similar to Figure 3. Go to the tab that says "IP Address" and make sure "Obtain an IP address automatically" is selected. This will set your software so that the IP address will be downloaded from our server.



(Figure 3)

4) Next . . . Click on the DNS Configuration tab. Enter your data to closely match Figure 4.

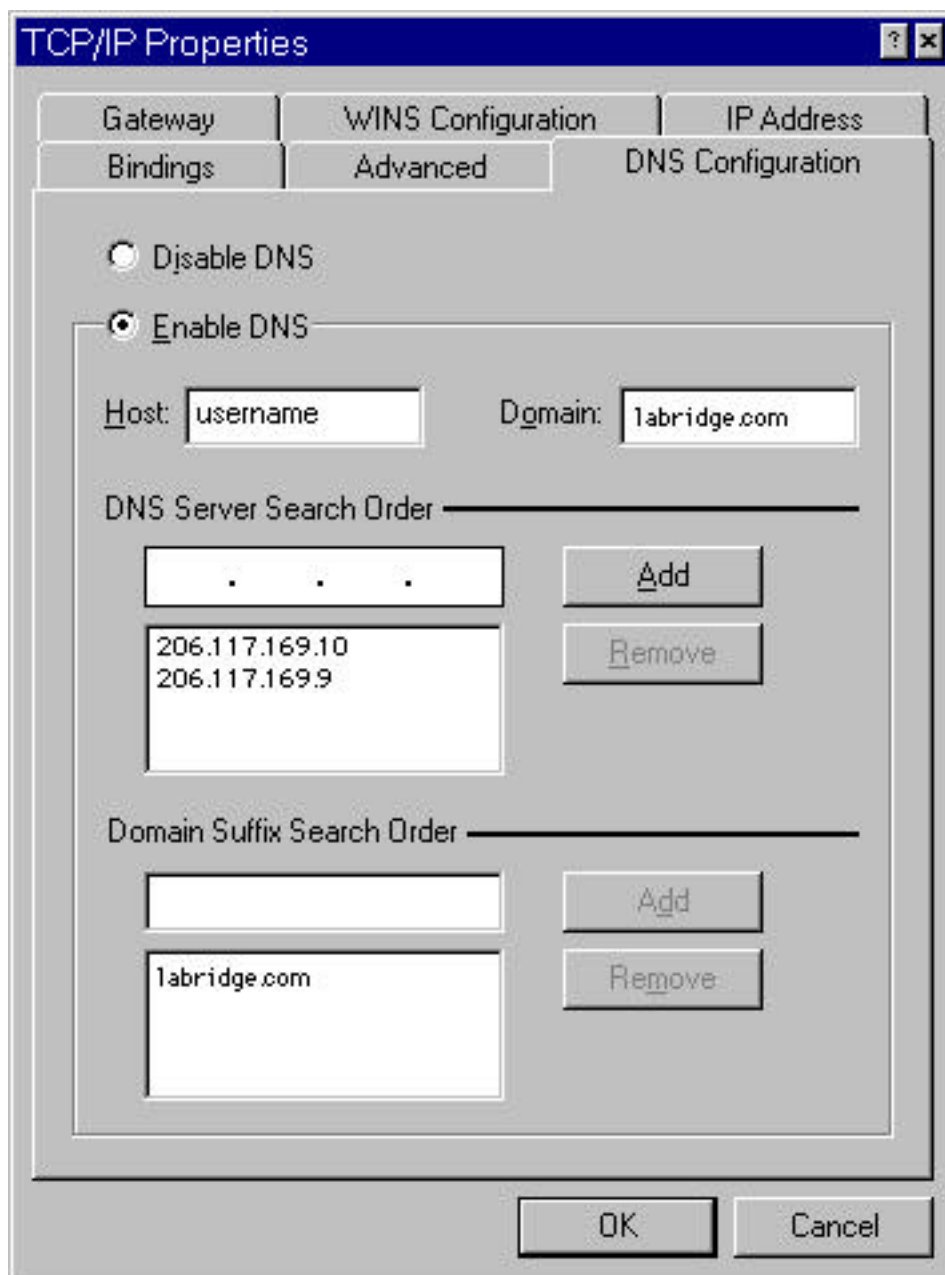
- Select Enable DNS
- Host: Enter your username
- Domain: labridge.com
- The DNS Server Search Order should be set to:
  - 206.117.169.10 (Add)
  - 206.117.169.9 (Add)
- The Domain Suffix Search Order should be set to:
  - labridge.com (Add)

If you have an U.S. and International account. Enter your data with the

following information.

- Select Enable DNS
- Host: Enter your username
- Domain: labridge.com
- The DNS Server Search Order should be set to:
  - 38.8.50.2 (Add)
  - 192.33.4.10 (Add)
- The Domain Suffix Search Order should be set to:
  - ns3.labridge.com (Add)
  - ns4.labridge.com (Add)

When your screen looks like Figure 4, press OK.

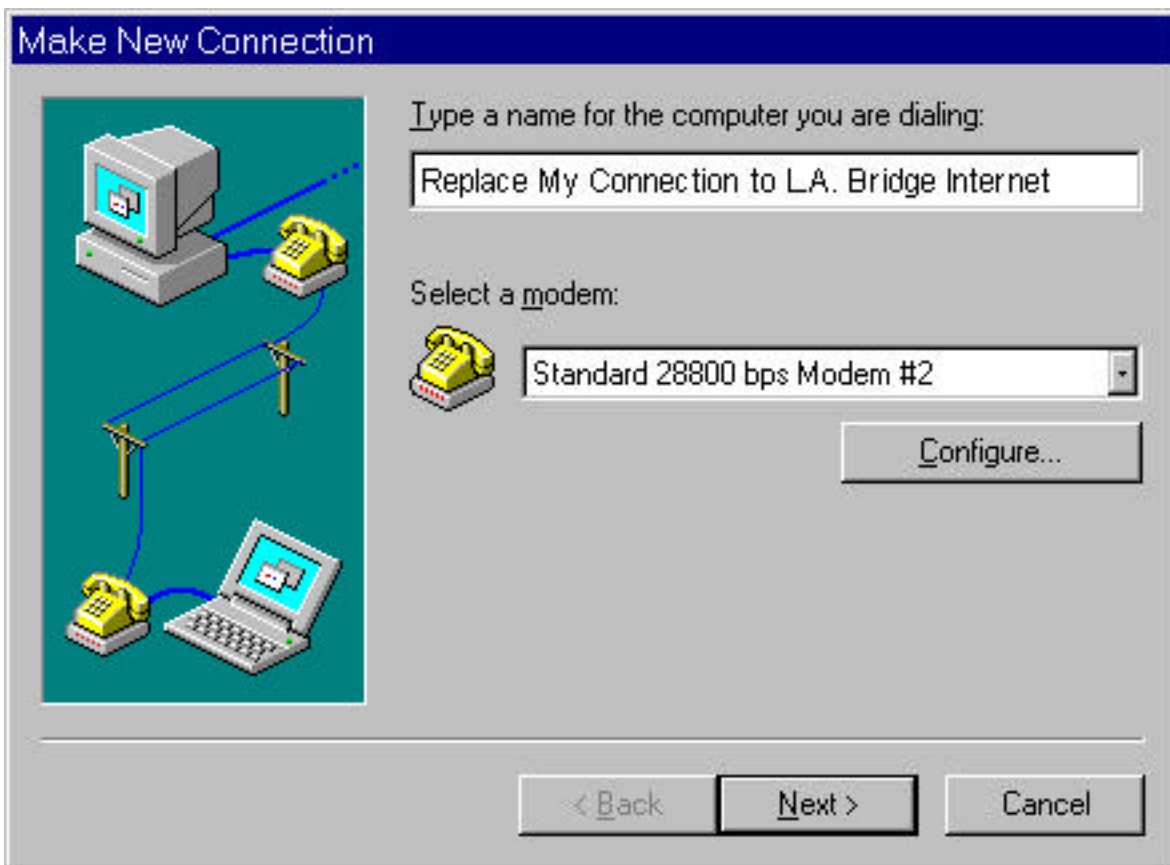


(Figure 4)

5) You should now be back at the screen that resembles Figure 1. Click OK to close the Network control panel and you will be prompted to restart Windows 95. Select "YES" to restart Windows 95 to make sure that your changes are put into effect.

## Creating a New Connection:

1) Open the Dial-Up Networking folder found in "My Computer". If this is the first time you open it, a connection wizard will run to help you enter all the information necessary for a dial-up connection. If not, you need to open "Make a New Connection" and follow the instructions for creating a dial-up networking connection. When you are finished, there will be an icon in the folder that you can double-click to connect. You might want to make a shortcut to the connection on your desktop for easier access. The opening window should look like Figure 5.



(Figure 5)

2) Referring to Figure 5, replace My Connection with L.A. Bridge Internet. Make sure you have selected the proper modem for your system. Press "Next" to proceed to the next window.

3) You should now see Figure 6. Enter the proper Dial-Up telephone number local to your area. **Note:** If you have an U.S and International account please choose your local [Dialup number here](#).

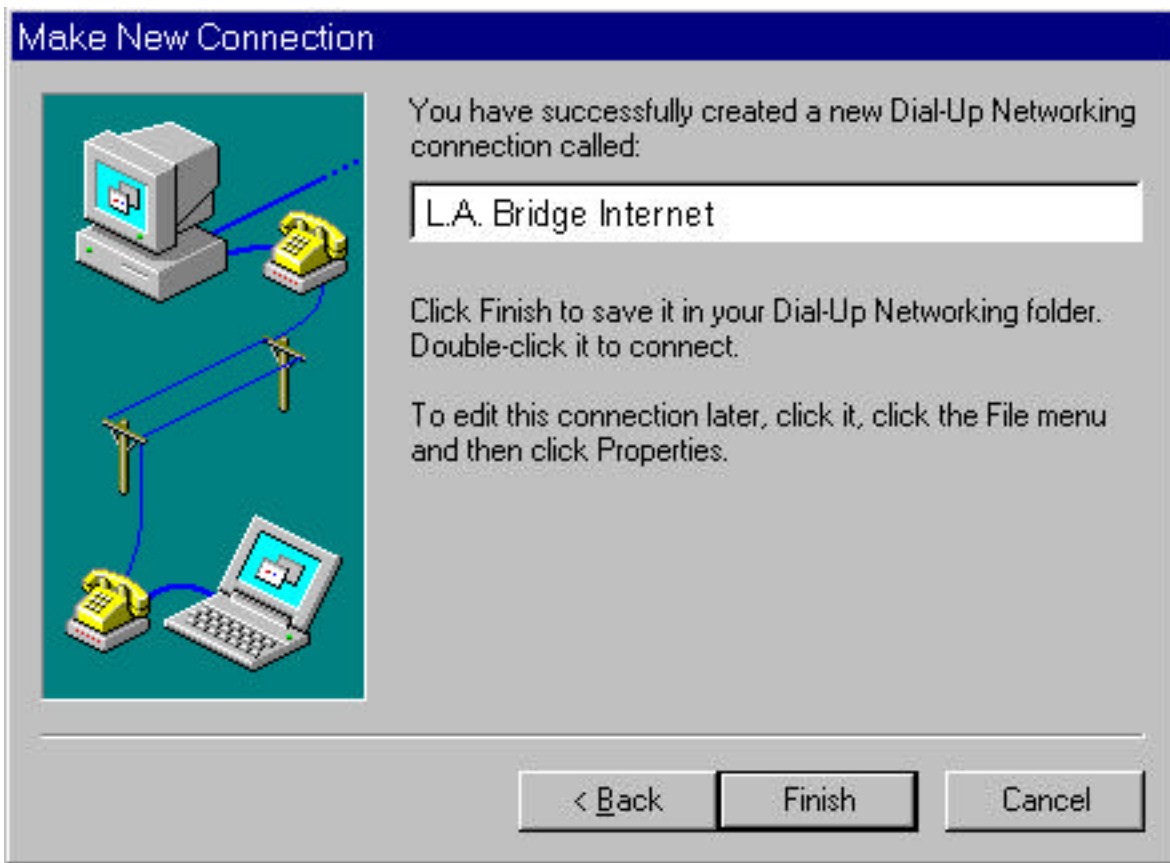
(<http://www.LABridge.com/site/pages/configure/my/pops/>) Press "Next" to proceed to the next window.



(Figure 6)

4) You should now be at the final set-up window. Your screen should look like Figure 7. If not, select "Back" to make any necessary changes or corrections. Click "Finish" when you are done.

5) A new Icon will appear in your Dial-Up Networking folder with the name L.A. Bridge Internet (see Figure 8).



(Figure 7)

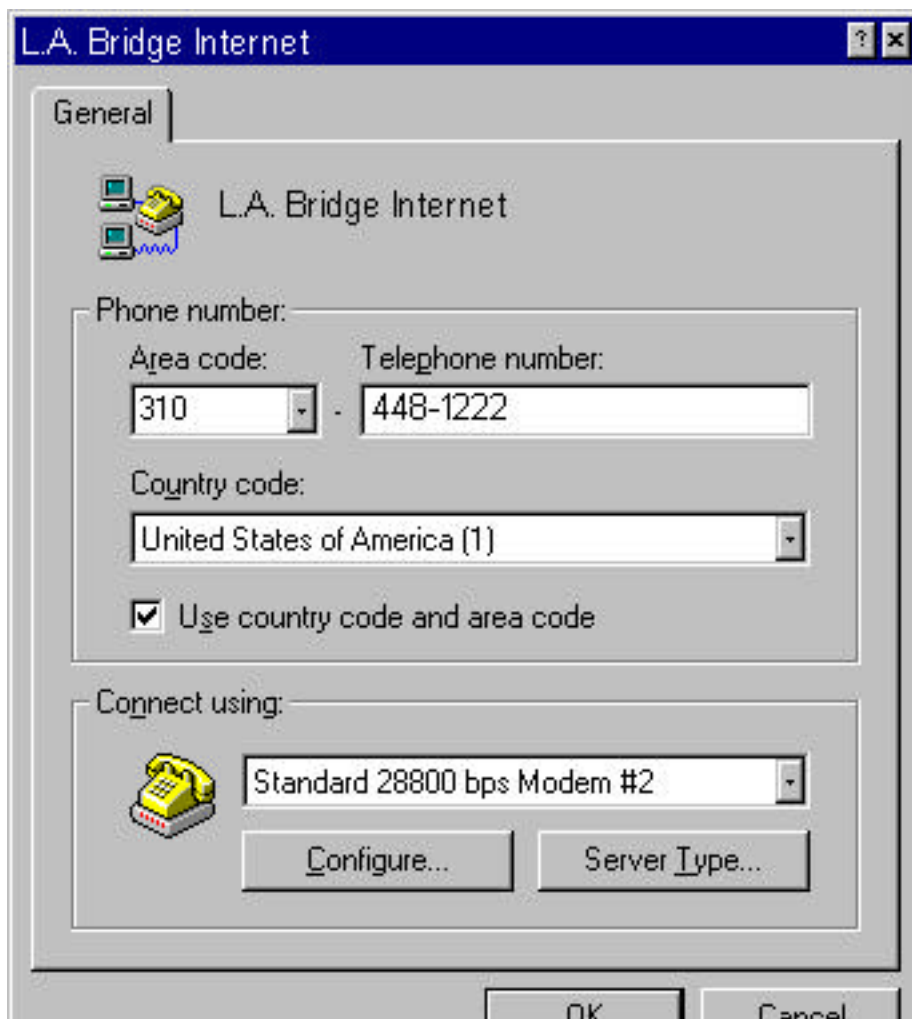
## Configuring a New Connection:

1) You will now have to configure the New L.A. Bridge Internet Connection. As a reminder, to get to the Dial-Up Networking window from the desktop, click and enter from "My Computer". Refer to Figure 8. To proceed with the configuration, Right-Click on the L.A. Bridge Internet icon you just created and choose "Properties".



(Figure 8)

2) You should now see on your screen something similar to Figure 9, the L.A. Bridge Internet connections window. Recheck the telephone number you are dialing and the modem that you will be using. Click the "Configure" button to continue with the configuration.

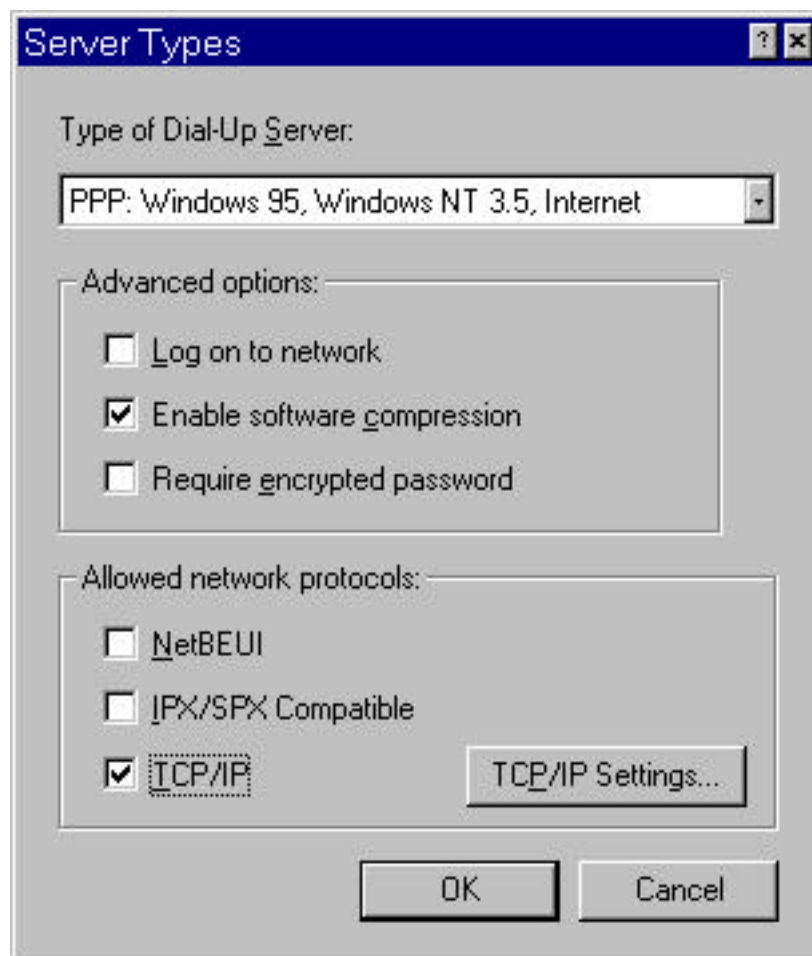




(Figure 9)

3) After clicking the "Server Type" button from the previous screen, you should now see Figure 10, the Server Types window. Make sure to configure your system to match the settings here. You should have "PPP, Windows 95, Windows NT 3.5, Internet" selected as the Type of Dial-Up Server. For the Advanced Options, Enable software compression should be checked. For the Allowed Network Protocols, TCP/IP should be checked.

4) To ensure that your computer can correctly negotiate the proper set of protocols, the TCP/IP setting must be properly configured. Referring to Figure 11, select the "TCP/IP Settings..." button to proceed with the TCP/IP configuration.



(Figure 10)

5) You should now see Figure 11 on your screen. Enter your data to closely match the settings shown here.

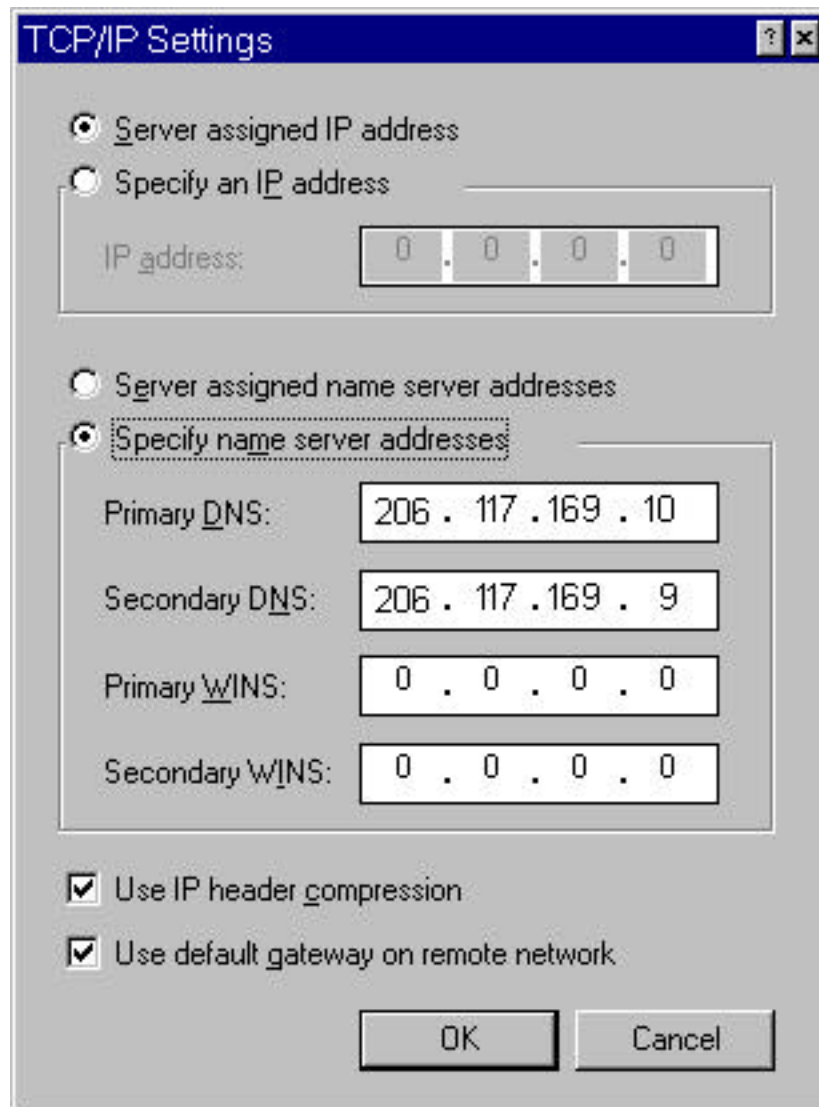
Select Server Assigned IP Address

Select Specify Name Server Address:

- Primary DNS: 206.117.169.10
- Secondary DNS: 206.117.169.9
- Primary WINS: 0. 0. 0. 0
- Secondary WINS: 0. 0. 0. 0

Both "Use IP Header Compression" and "Use Default Gateway on remote network" should be selected or checked.

When your screen looks like Figure 11, press OK.



(Figure 11)

8) You should be back to the screen similar to Figure 10, the Server Types window. Press OK.

9) Now you should be sent back to the screen similar to Figure 9, the L.A. Bridge Internet connections window. Press OK

Now you are ready to connect !!!!

### Connecting to L.A. Bridge Internet:

1) Locate and open the Dial-Up Networking folder (in "My Computer" on your desktop). Refer to Figure 8.



(Figure 8 )

2) Double click on the L.A. Bridge Internet connection icon. The "Connect To" window will come up. After double-clicking, refer to Figure 13.

3) The "Connect To" window is shown by Figure 12. The main number is 310-448-1222. You do not need to enter your username\* and password here since you will be required to enter that information in a terminal window. Press the "Connect" button to start the login process.

**\*Note:** if you have a U.S. and International account you need to add "ais/" before your username.



(Figure 12)

Congratulations !!! You are now ON-LINE.

OK, WHAT NEXT???

Congratulate yourself if you've gotten this far!!

## What Now?

You're ready to go. Once you're online you can access all the internet programs such as [Netscape](#), [Eudora](#), [Yahoo!](#) and [Internet Explorer](#). Information on these is contained on our website at <http://www.LABridge.com> - you can type this in the location window in either Netscape or Internet Explorer. For help on setting up email and news you can visit our users section at <http://www.LABridge.com/site/pages/configure/my/>

...a community Internet Service Provider

**Postal Mail:** 2633 Lincoln Blvd. #426 Santa Monica, California 90405

**NOC:** [4676 Admiralty Way #450 Marina Del Rey, CA 90292](#)

v: 310.823.6416 ~ [LABridge@LABridge.com](mailto:LABridge@LABridge.com) ~ f: 310.821.6529

[Home](#) | [Sign up](#) | [Services](#) | [Members](#) | [Support](#)  
[Calendar](#) | [About](#) | [Partnership](#) | [Employment](#)